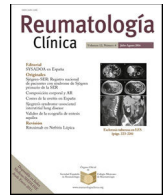




Sociedad Española
de Reumatología -
Colegio Mexicano
de Reumatología



Images in Clinical Rheumatology

Schwannomas mimicking rheumatologic conditions

Schwannomas imitando patologías reumatológicas

Joana Silva-Dinis^{a,b,*}, Ana Valido^a, Joaquim Polido-Pereira^{a,b}, Nikita Khmelinskii^a

^a Serviço de Reumatologia, Hospital de Santa Maria, Centro Hospitalar Universitário Lisboa Norte, Centro Académico de Medicina de Lisboa, Lisboa, Portugal

^b Unidade de Investigação em Reumatologia, Instituto de Medicina Molecular, Centro Académico de Medicina de Lisboa, Lisboa, Portugal



ARTICLE INFO

Article history:

Received 19 October 2019

Accepted 8 January 2020

Schwannomas, also known as neurilemmomas or Schwann cell tumors, are benign tumors originating from Schwann cells of the peripheral nerve sheath, occurring more frequently along the brachial plexus and spinal nerves.^{1–4} Despite being the most common tumors of the peripheral nerve sheath, they are rarely

encountered and diagnosis is often delayed.^{2,4} These entities can mimic rheumatologic conditions such as synovial cysts, bursitis or ganglions.

A 36-year-old healthy woman (Fig. 1) presented with a five-year history of a slowly enlarging mass in the popliteal region, with no

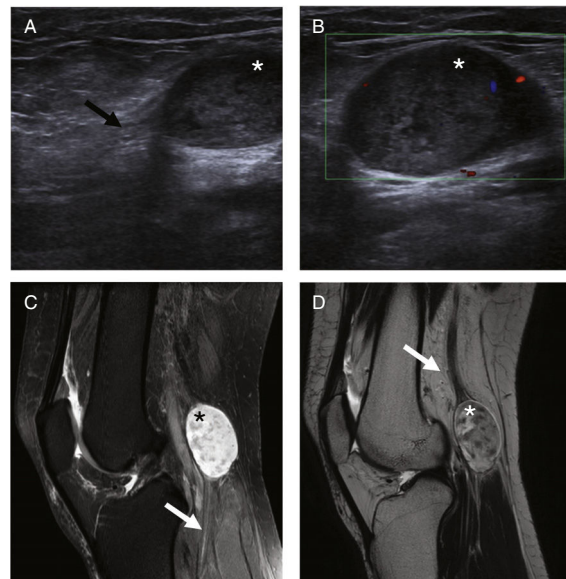


Fig. 1. Ultrasound (A, B) and MRI (C, D) images of the knee depicting a well-defined solid mass (*) localized in the popliteal region, originating from the tibial nerve (arrows), with a heterogeneous structure with low intensity MRI-signal on T1 sequences and high intensity on DP SPAIR (C) and T2 sequences (D).

* Corresponding author.

E-mail address: joanadasilvadinis@gmail.com (J. Silva-Dinis).

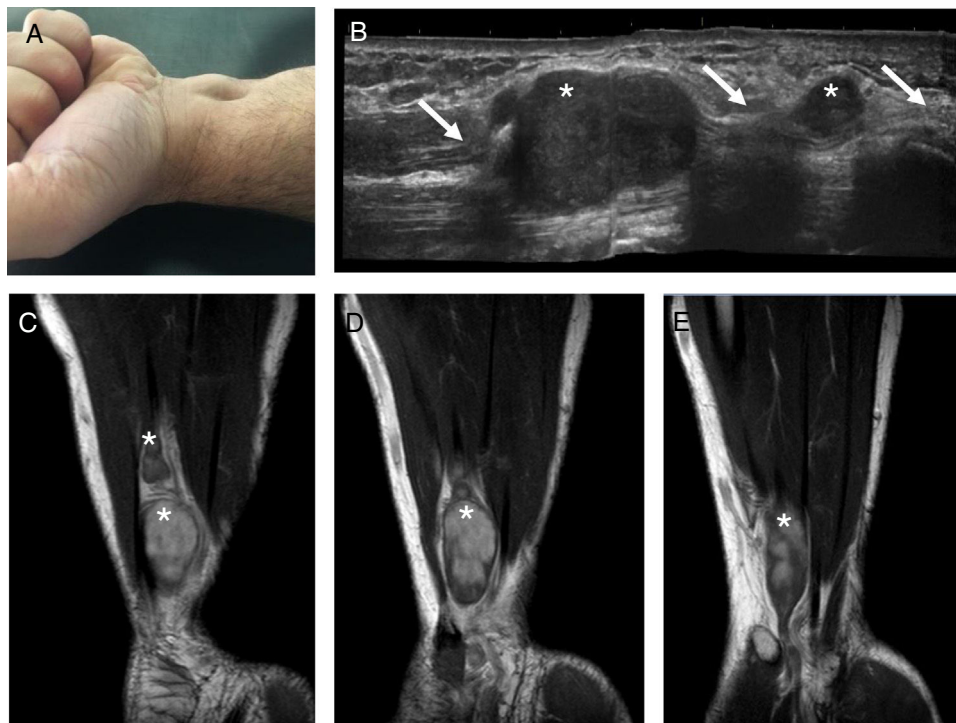


Fig. 2. Picture of an enlarging mass on the distal part of the anterior aspect of the forearm and wrist (A). Ultrasound (B) and T1-weighted MRI images (C–E) depict multiple well-defined gadolinium-enhanced masses (*) originating from the cubital nerve (arrow) suggestive of cubital nerve schwannoma.

previous history of trauma. A mobile and solid mass was palpable at the popliteal region evocative of a Baker's cyst, although the Foucher's sign was not present on examination. The patient was referred for ultrasound-guided aspiration and corticosteroid infiltration. However, ultrasound (US) documented a 29.9×25.5 mm heterogeneous solid mass in the popliteal region, originating from the tibial nerve. Magnetic resonance imaging (MRI) showed a homogeneous low intensity in T1-weighted images and heterogeneous high intensity in T2-weighted images, suggestive of a tibial nerve schwannoma.

A 47-year-old healthy male (Fig. 2) presented with a one-year history of an enlarging mass on the distal part of the anterior aspect of the forearm and wrist, with no associated trauma or inflammatory signs. The clinical diagnosis was of a synovial cyst and the patient was referred for US-guided aspiration. US identified well-defined masses (the biggest with 26×11 mm) originating from the cubital nerve. The diagnosis of cubital nerve schwannoma was confirmed by MRI, which documented 5 nodular masses originating from the cubital nerve.

Both patients were referred to but refused surgical excision of the tumors.

These cases highlight the importance of considering schwannomas in the evaluation of patients with nodules suggestive of synovial cysts, both on physical examination and when performing US or US-guided techniques. In both cases, US was crucial for the correct diagnosis these entities.

Conflict of interests

The authors declare no conflict of interest.

References

1. Watanabe K, Fukuzawa T, Mitsui K. Tarsal tunnel syndrome caused by a Schwannoma of the posterior tibial nerve. *Acta Med Okayama*. 2018;72:77–80. <http://dx.doi.org/10.18926/AMO/55667>.
2. Judd T, Jones T, Thornberry L. Schwannoma of the posterior tibial nerve. *J Am Podiatr Med Assoc*. 2014;104:539–43. <http://dx.doi.org/10.7547/0003-0538-104.5.539>.
3. Komurcu E, Golge UH, Kaymaz B, Erdogan N. Popliteal schwannoma mimicking baker cyst: an unusual case. *J Surg Case Rep*. 2013;2013. <http://dx.doi.org/10.1093/jscr/rjt066>, rjt066.
4. Lai C-S, Chen I-C, Lan H-C, et al. Management of extremity neurilemmomas: clinical series and literature review. *Ann Plast Surg*. 2013;71:S37–42. <http://dx.doi.org/10.1097/SAP.0000000000000042>.