



Sociedad Española  
de Reumatología -  
Colegio Mexicano  
de Reumatología

# Reumatología Clínica

www.reumatologiaclinica.org



Images in Clinical Rheumatology

## Massive osteolysis in a patient with Gorham-Stout syndrome<sup>☆</sup>

### Osteolisis generalizada en un paciente con síndrome de Gorham-Stout

Irene María López García,<sup>\*</sup> María Teresa Lorenzo Domínguez, Ana María Fernández Martínez, María Teresa Cuesta Marcos

Servicio de Radiodiagnóstico, Complejo Asistencial Universitario de León, León, Spain



#### ARTICLE INFO

##### Article history:

Received 4 June 2020

Accepted 15 July 2020

Available online 16 March 2021

#### Presentation of the clinical case

A 20-year-old male patient was referred for presentation of lytic lesions in an X-ray of the pelvis. He had had a history of chronic disabling lumbago since the age of 14, coinciding with a sport's injury. He did not present with any family background of osteolysis. Physical examination reported ectomorpha phenotype, lumbar rectification and painful palpation in the last lumbar vertebrae. There were no neurological changes. Nephropathy markers were negative.

The radiological bone series showed lytic lesions in the skull vault, sacrum, pelvis, femurs, costal arches, and vertebra L4 (Fig. 1). Magnetic resonance confirmed the described osteolysis (Fig. 2), diffuse osteolysis in vertebral bodies and posterior elements of the cervical, dorsal and lumbar spine, multiple vertebral and dorsal flattening and secondary hyperkyphosis (Fig. 3). Computerised tomography demonstrated destruction of the cortical bone in vertebral bodies (Fig. 4).

Imaging tests showed a left laterocervical lymphangioma (Fig. 5) and multicystic splenomegalia compatible with diagnosis of diffuse abdominal lymphangioma (Fig. 6). The bone biopsy revealed discreet medullar lymphoid infiltration, with no signs of malignancy.

Based on clinical, radiological and histopathological findings a diagnosis of Gorham-Stout syndrome was made. The patient rejected radiotherapy and began oral treatment with alendronic acid (70 mg/week) and sirolimus (2 mg/day) until the next control visit.

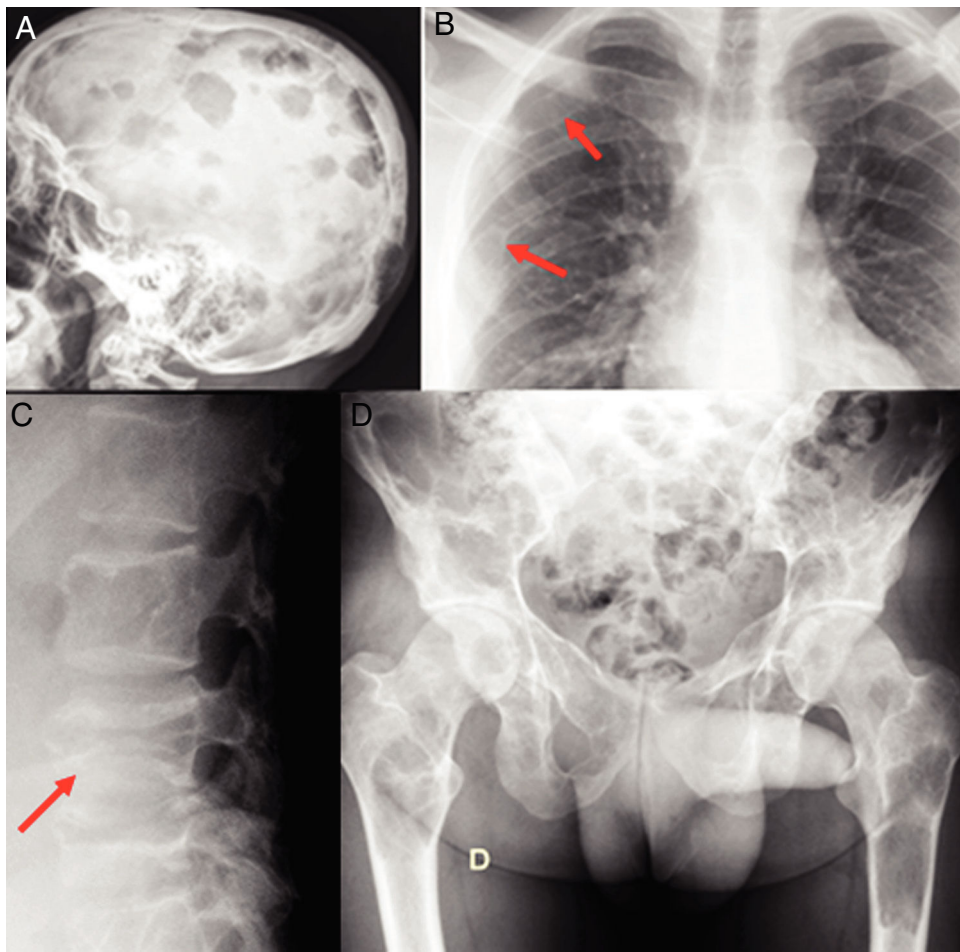
#### Discussion/comment

Gorham-Stout syndrome is a sporadic bone disease, 300 cases of which have been described,<sup>1</sup> approximately 50 in the vertebral spine.<sup>2</sup> It is characterized by a progressive osteolysis with no bone regeneration, with destruction of the cortical bone, triggered by non neoplastic lymphangiogenesis and hemangiogenesis at medullar level, which may infiltrate soft tissues and lead to fibrosis.<sup>3–5</sup> Involvement is usually regional or multifocal,<sup>5</sup> mostly in the axial skeleton.<sup>3</sup> The evolutionary course of the disease is unpredictable, with up to 16% mortality.<sup>6</sup> Diagnosis is made by exclusion, ruling out lymphangiomatosis, which does not injure the cortical bone.<sup>3,7</sup> Magnetic resonance with gadolinium contrast agent is used to monitor patient evolution,<sup>8</sup> showing lymphangiogenesis in the active lesions.<sup>9</sup> Multifocal location and extensive involvement of the spine makes this case exceptional.

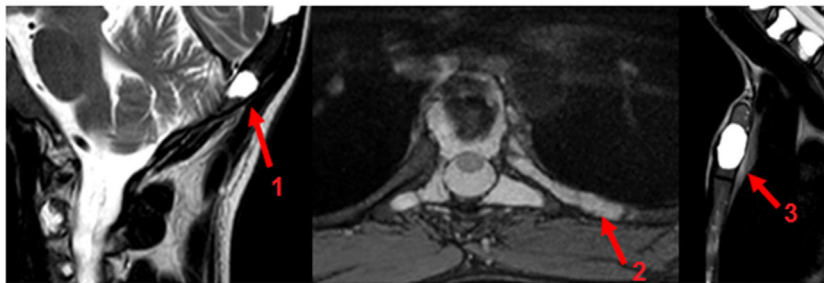
<sup>☆</sup> Please cite this article as: López García IM, Lorenzo Domínguez MT, Fernández Martínez AM, Cuesta Marcos MT. Osteolisis generalizada en un paciente con síndrome de Gorham-Stout. Reumatol Clin. 2021;17:485–488.

<sup>\*</sup> Corresponding author.

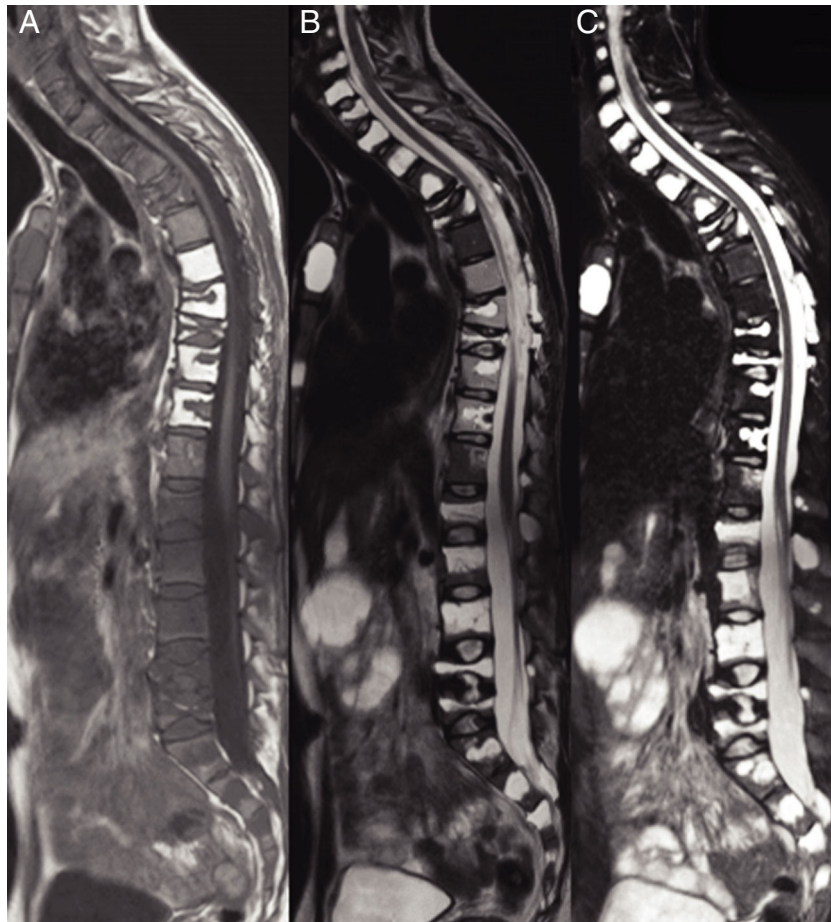
E-mail address: irene.lopgar1@gmail.com (I.M. López García).



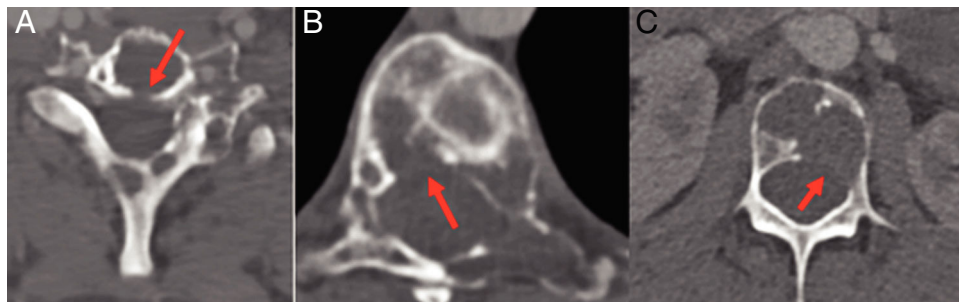
**Figure 1.** Radiographic bone series. A) Multiple lytic lesions in skull vault with geographic sides and no sclerosis. B) The arrows show the osteolytic lesions in the right posterior fourth and sixth costal arches s. C) Fracture-flattening of L4. D) Extensive injuries in sacrum, pelvis, and both femurs.



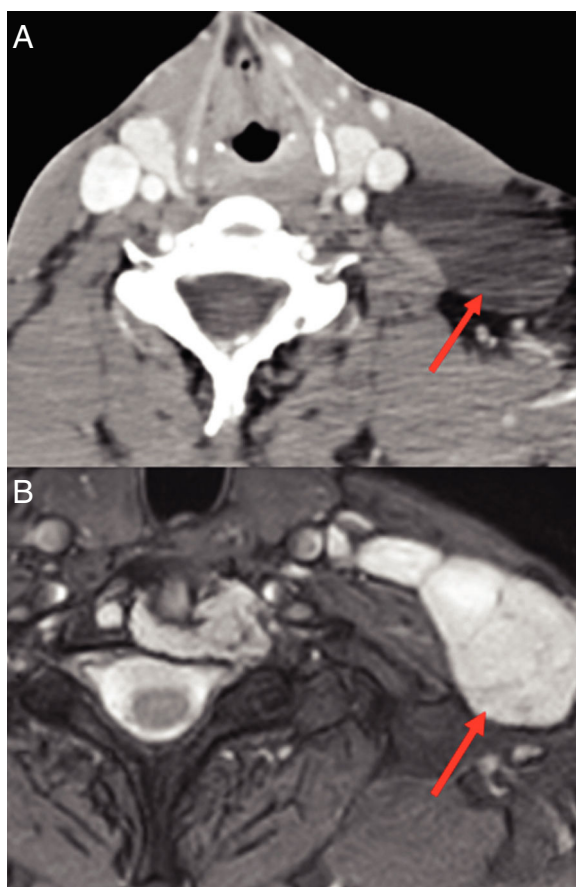
**Figure 2.** MR imaging where hyperintense focal bone lesions are identified. In sagittal planes STIR of skull vault (arrow 1) and sternum (arrow 3). Image in axial plane of T2 Med of the fifth posterior left costal arch (arrow 2).



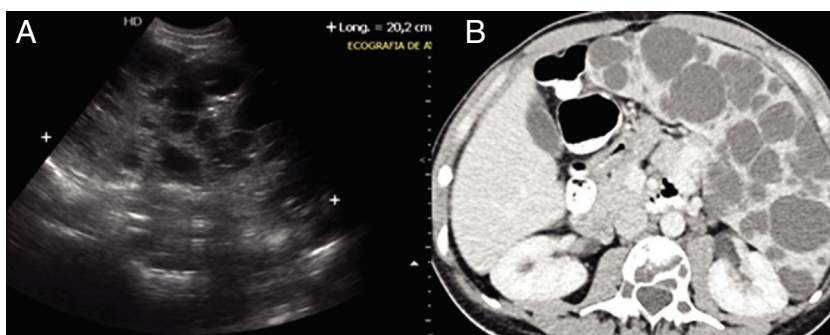
**Figure 3.** MR images where multiple vertebral flattening can be visualised with secondary hyperphosis, in the sagittal plane of the cervical, dorsal and lumbar spine, enhanced in T1 (A), T2 (B) and STIR (C). Multiple lesions which are hypointense in T1 and hyperintense in T2-STIR with diffuse distribution.



**Figure 4.** TC with view of cervical, dorsal and lumbar spine bone. Multiple lytic lesions with destruction of cortical bone (arrows). A) In the posterior margin of the vertebral body. B) In the right posterolateral margin of the T8 vertebral body. C) In the left posterolateral margin of the L3 vertebral body.



**Figure 5.** A) cervical CT. B) Axial cervical MR T2 Med. Left laterocervical mass with fluid signal and septa (arrows) related to lymphangioma.



**Figure 6.** A) Ultrasound of the abdomen. B) CT of the abdomen with intravenous contrast in portal venous phase. Large multicystic splenomegaly of 20 cm in longitudinal diameter in relation to diffuse lymphangioma.

### Conflict of interests

The authors have no conflict of interest to declare.

### References

- Dellinger MT, Garg N, Olsen BR. Viewpoints on vessels and vanishing bones in Gorham-Stout disease. *Bone*. 2014;63:47–52, <http://dx.doi.org/10.1016/j.bone.2014.02.011>.
- Du CZ, Li S, Xu L, Zhou QS, Zhu ZZ, Sun X, Qiu Y. Spinal Gorham-Stout syndrome: radiological changes and spinal deformities. *Quant Imaging Med Surg*. 2019;9:565–78, <http://dx.doi.org/10.21037/qims.2019.03.17>.
- Lala S, Mulliken JB, Alomari AI, Fishman SJ, Kozakewich HP, Chaudry G. Gorham-Stout disease and generalized lymphatic anomaly-clinical, radiologic, and histologic differentiation. *Skeletal Radiol*. 2013;42:917–24, <http://dx.doi.org/10.1007/s00256-012-1565-4>.
- Nikolaou VS, Chytas D, Korres D, Efstathopoulos N. Vanishing bone disease (Gorham-Stout syndrome): a review of a rare entity. *World J Orthop*. 2014;5:694–8, <http://dx.doi.org/10.5312/wjo.v5.i5.694>.
- Cano B, Insa S, Cifrián C, Cortinas H, Hernández M. Hallazgos radiológicos del síndrome de Gorham-Stout. *Radiología*. 2006;48:33–6, [http://dx.doi.org/10.1016/S0033-8338\(06\)73127-7](http://dx.doi.org/10.1016/S0033-8338(06)73127-7).
- Kai B, Ryan A, Munk PL, Dunlop P. Gorham disease of bone: three cases and review of radiological features. *Clin Radiol*. 2006;61:1058–64, <http://dx.doi.org/10.1016/j.crad.2006.04.014>.
- Iacobas I, Adams DM, Pimpalwar S, Phung T, Blei F, Burrows P, et al. Multidisciplinary guidelines for initial evaluation of complicated lymphatic anomalies-expert opinion consensus. *Pediatr Blood Cancer*. 2020;67:e28036, <http://dx.doi.org/10.1002/pbc.28036>.
- Martínez-León MI, Weil-Lara B, Herrero-Hernández A, Ceres-Ruiz L. El síndrome del hueso evanescente. *Radiología*. 2001;43:439–44, [http://dx.doi.org/10.1016/S0033-8338\(01\)77016-6](http://dx.doi.org/10.1016/S0033-8338(01)77016-6).
- De Keyser CE, Saltzherr MS, Bos EM, Zillikens MC. A large skull defect due to Gorham-Stout disease: case report and literature review on pathogenesis, diagnosis, and treatment. *Front Endocrinol*. 2020;11:37, <http://dx.doi.org/10.3389/fendo.2020.00037>.